

# TREES Please!

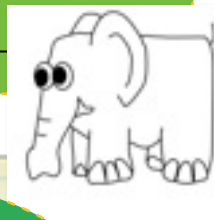
Ask your grown up to help you find lions, turkeys, fish even elephants among the trees and flowers in the Gardens!

Become a Garden ZOO explorer!

Go to the tree near the start of the Prime Ministers Avenue. [back of Conservatory] 'Gobble Gobble' what is the tree's name:

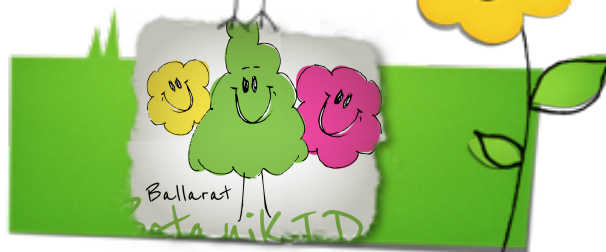


Now look at another tree the Bunya Bunya Pine Tree (back of the Conservatory) What animals does the bark remind you of?



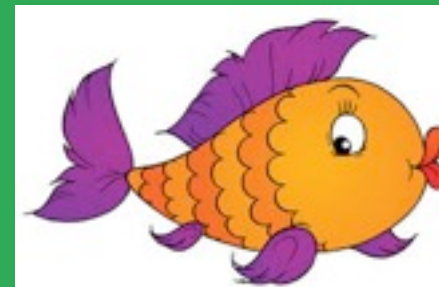
There are special animals that seem to be guarding the Gardens, can you find them?

Where are they?

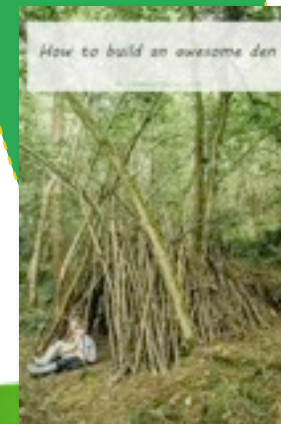


Blowing bubbles is what we so all day!

Can you find us in our pond?



Explore the Gardens to Find a tree that would make a great cubby!



# TREES Please!

## Hints For Grown Ups

- Encourage your child to be an explorer of the Gardens...its in the bag!
- Please place a gold coin for each child in the envelope and post in the green watering can attached to Friends of the Gardens Plant stall in front of the Conservatory thankyou
- Use the pipecleaners to thread leaves and make a nature necklace.
- There are five things to explore and find! Use the bag to collect nature things as you go along. Only collect things that have fallen to the ground.
- Animals and trees are a bit of a theme
- The final discovery is to find a tree that would make a great cubby ...the ideal trees for this are where the leaves and branches touch the ground,

### **Extra Ideas if you have time!**

**Make a tiny cubby with sticks leaves etc at the base of a tree.**

- Make a Nature Bangle with the special tape available at the Craft Cottage . Follow the signs to the Craft Cottage



- The Turkey Oak is found just at the start of the Prime Ministers Avenue at the back of the Conservatory.



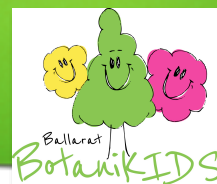
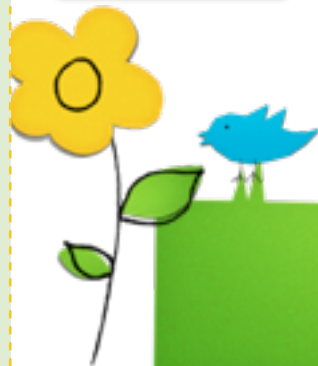
- The Bunya Bunya Pine tree is very near the Turkey oak. It is a strange tree with bark like a wrinkly elephant's leg,, it also has holes in the bark like eyes!



- The lions are at the main gate of the Gardens and note their teeth that look like human teeth rather than lion's teeth! Weird!



- The fish are in the raised fish pond at the rear of the Statue House near the fernery. There are many golden carp in the pond try to count them.



Trees for Cubbies ....these can be found past the Conservatory in the south part of the Gardens!

