

Wellingtonia



ABN 32 346 573 092 ACN 3465 info@fbbg.org.au www.fbbg.org.au

Tel. George Longley Centre 5342 9354 PO Box 33W BALLARAT WEST 3350

PP Number 100020008

NEWSLETTER – WINTER 2018

'Clippings from the President'



FRIENDS OF BALLARAT BOTANICAL GARDENS PRESIDENT'S REPORT

Fernery Update - it was most heartening to have confirmation in the Council's Draft Budget that \$1.4m. has been allocated towards the Fernery redevelopment. Along with other budget items this still needs to be ratified at a special Council meeting on 27 June.

Together with a contribution of \$200,000 from the FBBG, we now have a budget of \$1.6m. After a 15 year delay we look like finally seeing a commencement. At this stage the project is still undergoing final cost estimates and the approval process by Heritage Victoria.

In the meantime the board at the front of the Fernery will shortly be replaced with an updated version to reflect the current situation.

Trust Fund and Foundation Update – I can now confirm that we have a complete report on the Trust Fund being held by the City of Ballarat on behalf of the Friends, which is the core fund for the Foundation.

A sub-Committee consisting of Elizabeth Gilfillan, Mark Schultz and myself has been formed to develop a new governance structure for the **Foundation**. Mark is a director of "Governance Today" and has very kindly volunteered his assistance in drafting up a submission, which we presented to representatives of the City of Ballarat on the 28 May on behalf of the FBBG.

This submission details a new governance and management model, which will not only comply with all regulations and

legislation to maintain the current tax status, but will also actively promote, attract and distribute community funds from all sectors, i.e. individuals, business, philanthropic and government. The expected outcome from this new structure will be a greater investment of funds in the Gardens.

The submission was well received by the City of Ballarat and will shortly be presented to Council for adoption. It is to be hoped that the revised Foundation will be finalised towards the latter part of the year, and a public launch planned. This will be a very significant outcome for the FBBG in raising funds for the Gardens.

Placemaking Project – Dr Tanja Beer, who is an Academic Fellow In Performance Design & Sustainability at the University of Melbourne, has been in touch with the FBBG

seeking our assistance in a Placemaking Project in the North Gardens. The project will involve working with about ten landscape students from the University of Melbourne, to develop hypothetical ideas that connect the South Gardens with the new Indigenous sculpture trail in the North Gardens.

Dr. Beer and her assistant will be in Ballarat on 26 July to meet with the City of Ballarat Events Team, Peter Marquand and myself and

other members of the Friends. This will be followed by the students first visit to the Gardens on 31 July at 12pm for an informal presentation from the Friends. The second visit will be during the week of 24 -28 September to finalise their designs. The proposals and architectural

Continues page 2...

*...After a 15 year
delay we look like
finally
seeing a
commencement.*

RECOGNITION OF COMMUNITY SERVICE

Kathleen Hobson has been awarded a Medal of the Order of Australia. A tireless worker for Ballarat's Botanical Gardens and Anglicare's emergency relief centre has been rewarded for her dedication to improving the lives of others. Congratulations Kathleen!



See page 7
regarding all
things plastic:
pots and bags!



Patron of the Ballarat Friends:

Prof. Tim Entwistle,
Director and Chief Executive, Royal
Botanic Gardens, Melbourne.

See page 4 for new extracts
from Tim's Blog ...

renders will then be presented in an exhibition that showcases the work to the general public.

Our Autumn General Meeting on 17 May was well attended as members were keen to hear our guest speaker Elizabeth Gilfillan's report on her trip in 2017 to the 6th Global Congress of Botanic Gardens in Geneva. I'm sure this was enjoyed by all who attended as it gave us a very good insight into a major global botanical event.

The only item of business conducted at the meeting was a proposal to increase **membership fees**. As a result of Committee discussions a motion was moved and carried to increase fees by \$5 across the board. The background to this was the requirement to print new membership forms, so the opportunity was taken to update the form with some minor changes. During this process membership fees were discussed, and a recommendation was taken to the General Meeting.

In my Report to the meeting I conveyed the intent of the Committee to replace nursery **plastic carry bags** with a more environmentally friendly option. Several alternatives are currently being considered by the Committee, so if any member has a brainwave please contact one of the Committee Members.

I also reported on **Garden Designfest**, which will be held over the week-end of November 10 - 11, 2018. This event is held every two years and is being jointly organised by the Rotary Clubs of Kew, North Brighton & Central Melbourne.

The principal aim of Garden Designfest this year is to raise funds for the major Rotary charity "*End Trachoma*". However, an Agreement has been drawn up which provides for 20% of all gate receipts, advertising and sponsorship monies received to be passed on to the Rotary Club of

Ballarat West, who in turn will donate these funds to the **Gate Keepers Cottage** project. The Agreement also guarantees a minimum contribution of \$5,000, and the overall outcome has the potential for a significant financial contribution towards the Cottage.

The Ballarat sub-Committee consists of Rotary Club of Ballarat members, Lidia Aitken, Phil Roberts, Barry Henderson & Ian Rowe; City of Ballarat representatives Mayor Cr. Samantha McIntosh & Terry Demeo; FBBG members Julie Bradby, Lorraine Powell, John King & myself.

The Committee is making good progress in identifying suitable gardens and organising sponsors. We are looking for between 4 and 6 "designer gardens" on acreage in the Ballarat area. When all this information is collated it will be published in a Garden Designfest Booklet.

As we get closer to the event the Committee will be calling on volunteers to assist in selling raffle tickets and manning the gates at the various gardens.

At the time of the General meeting it was announced that Peter Marquand and his staff had won the Heritage Skills section of **Heritage Awards**, for the conservation of the collection of rare Begonias. Our congratulations go to Peter and his staff for a magnificent achievement, which acknowledges not only the current team but also all their predecessors.

By the time you read this Report Christine and I will be travelling around Ireland and the Southern part of England. Our last night will be a bit special as we are staying in the Castle in the grounds of Sissinghurst!

Robert Selkirk, President.

Please do not bring Pots or Plants from home to the Friends' nursery.



To reduce the risk of pest and disease introduction, **plastic pots and plants from home gardens are no longer permitted within the Ballarat Botanical Gardens or Friends Nursery.**

We thank you for your support in protecting our valuable collections.

AN EARTHLY PARADISE: *"At the meeting of the City Council yesterday Cr Elliott, expressed an opinion that within a few years' time the Ballarat Botanical Gardens would be recognised as the finest in Australia. He pointed out that five years ago the gardens cost the council £2000 annually, and now the cost was only £1500, while better results were obtained, and that what was formerly a wilderness was now transformed into an earthly paradise."* **The Ballarat Star, 03/05/1898.**

Contributed by an observant Friend, Doug Bradby.

FROM THE GUIDES GROUP:

Descriptions of BBG make reference to the outstanding mature significant trees. I would like to draw your attention to not only their maturity but the lineage of some of these trees in our Ballarat gardens. One feels so much respect and awe for these trees because they are such survivors. We have tree species that were around at the time of the dinosaurs or earlier.

We have several Maidenhair trees, *Ginkgo biloba*, and this species has not changed for more than 120 million years. They have refused to evolve in that time and have witnessed the drift of continents, the rise of mountain ranges, the ice age etc. There are Ginkgo trees in Hiroshima that survived the nuclear bomb. Keep in mind that the Ginkgos were before the modern conifers evolved. By the time man came on the scene it had retreated to the mountain forests in Eastern most China where it survived. Discovery of temple garden plantings and its arrival as a plant in Europe in 1730 began its new lease of life. Such tenacity to survive into modern times is to be respected and appreciated.

Today there are many cultivars of *Ginkgo biloba*. These range from those with deeply divided leaves such as 'Laciniata', to those of the weeping habit collectively described as 'Forma pendula', and tall narrow forms called 'Fastigiata'.

The species is hardy and very resistant to pests and diseases and is being increasingly planted in urban areas as it seems largely unaffected by urban air pollution.



Wollemi pine, Ballarat Botanical Gardens

So this "strangely sophisticated primitive" is being sought after as a robust plant. Word of warning – select the male tree; the ripe fruit from the female has an offensive vomit smell.

Scientists are obviously working on answers to explain why this tree is such a survivor. The Ginkgo is also adding to its long list of encounters as it adapts to our current encounter of climate change.

Gardeners are often attracted to plants which are a little out of the ordinary and explains why the araucaria species are well represented in the BBG.

The Araucaria, with their related genera Agathis and Wollemia were a major part of the vegetation of the warm humid forests of Gondwana during the time of the dinosaurs (Jurassic period 200-135 million years ago).

Araucaria bidwillii, Bunya pine, has its distinctive rounded crown, stiff prickly foliage and knobbly bark.



Leaves of araucarias

The Norfolk Island pine is more elegant and formal with its symmetry in its branches. The Parana pine, *Araucaria angustifolia*, has the thick tough scale like leaves with sharp edges that you imagine when thinking about Jurassic dinosaur trees.

The Wollemi pine, with its unusual pendulous foliage, was a more recent Jurassic tree discovery in 1994 by David Noble in the Blue Mountains.

The *Agathis robusta* Kauri Pine is also a member of the ancient family of conifers, the Araucariaceae, who date back to the Triassic period, well before flowering plants evolved. The Kauri pine is a tall tree with a massive trunk and dark green foliage.

So when you wander around the gardens give an occasional reflection on what is before you with these trees of ancient lineage. They are living fossils, trees that are from dinosaur times and they are the ultimate survivors. There is also a message there about the tenacity of nature. BBG is a museum – we have pieces of history. We have living history.



Araucaria Bidwillii, Ballarat Botanical Gardens

Terry O'Brien, Guides' Convenor

Whichever garden tool you want is always at the back of the shed.

TIM'S BLOG:

Tuesday, 8 May 2018

Temperate House reopened, this time by Sir David not QEII

It's taken five years, £41 million, the repair of 69,000 individual parts (including the replacement of 15,000 panes of glass), 180 km of scaffolding and more than 5,000 litres of paint, but Kew Gardens' **Temperate House** is back in action.

Designed by Decimus Burton, the gentleman who gave us the Palm House at Kew Gardens, this giant glasshouse was first opened in 1863, although with additions it was not complete until 40 years later. Queen Elizabeth II reopened it in 1981 after its last major restoration. This time Sir David Attenborough, with Kew's Chairman, Marcus Agius, and Director, Richard Deverell, did the honours last week (on 3 May 2018).



At 4,880 square metres in area, the Temperate House is twice as big as the Palm House, and the largest still-standing Victorian glasshouse in the world. For more than 150 years it has been home to plants from Africa, Australia, New Zealand, the Americas, Asia and the Pacific Island. Plants that otherwise would shiver (and die) outside in the London climate.

In the freshly renovated glasshouse you can see 10,000 plants, representing 1,500 species, displayed to highlight conservation efforts to protect our temperate forests. The famous South African cycad *Encephalartos woodii* remains, a species extinct in its natural habitat. Today this cycad is found only in botanic gardens and private collections around the world, and Kew's specimen is one of the finest.



(You can read more about this and other topics at Tim's Blog: <http://talkingplants.blogspot.com/>)

AUTUMN BUS/CAR EXCURSION:

Mount Macedon and Woodend are renowned for their magnificent gardens and stunning seasonal displays. On a perfect autumn day members set off to visit four very different parks and gardens.

We began with a short stroll at *Wombat Hill Gardens* in Daylesford, with its appealing views. Some climbed the tower; others enjoyed the fernery walk, Begonia house and sculptures.

We arrived at Mount Macedon along Honour Avenue, a magnificent golden vista, prior to meeting at *Centennial Park* for morning tea, with its significant exotic trees and the *Ash Wednesday Memorial*.

Stephen Ryan (*Gardening Australia* host 2008-11) purchased a completely denuded block after the 1985 fires and proceeded to dig and compost it, by hand. He named it *Tugurium*, Latin for a mean dwelling or hovel, in response to a neighbour's dismissive comment.

The area was added to when he purchased the adjoining property and then claimed two adjacent road reserves.

It is now a dense garden of meandering paths, three ponds, a chook house, vegetable patch and many lovely sitting spots.

His love of rare plants makes the garden full of interest and Stephen was generous with his time and knowledge. He opened his rare plants nursery, *Dicksonia*, especially for our group and many returned with unusual new plants.

After an enjoyable drive though Mount Macedon and mountainside bushland, we reached the renowned garden, *Ard Choille*, and had our picnic lunch on the croquet lawn. The secluded heritage house, fernery and trees were spared when the fireballs leapt over the property during the Ash Wednesday fires.

Helen Cottew led us on an informative walk, through the undulating garden, with its impressive trees, water features and views, culminating at the heritage listed (1880s) metal fernery. The garden is open twice a year, for its autumn colour and its thousands of spring bulbs and occasionally for special events, such as *Foray among the Funguses* (4 May). The scenic drive through Tylden, Trentham etc. was another lovely aspect to this delightful day.

You will be able to see photos taken by Margaret Thomas and John Heath on page 14.

Susan Pilbeam

The New Perennial Movement

Due to support from the FBBG, the documentary *Five Seasons: The Gardens of Piet Oudolf* was shown at *The Regent Cinema* Ballarat in May. Initial screenings were sold out and the season was extended. Thanks to all members who attended and showed there is an audience for such films.

The *New Perennial Movement* evolved in Europe in the early 1980s, led by the Dutch Wave and notably the work of Piet Oudolf, considered "the most influential garden designer of the past 25 years." (*Telegraph*) It has now spread worldwide, with its focus on naturalistic, long term design. Plants creep, climb, seed and are appreciated in all their phases.

The movement also converges with contemporary thought about architecture, nurturing biodiversity and the importance to our mental health of connecting to the natural world.

"For me, garden design isn't just about plants, it is about emotion, atmosphere, a sense of contemplation. You try to move people with what you do. You look at this, and it goes deeper than what you see. It reminds you of something in the genes — nature, or the longing for nature." Piet Oudolf

Piet Oudolf was born in 1944 in Haarlem, Netherlands. He started a perennials nursery with his wife Anja and his garden has become renowned for its radical approach and ideas about planting design. He co-founded *Future Plants*, a company specialising in selecting, growing, breeding and protecting plants for landscaping and public areas. Recent projects include *The High Line*, New York; *Serpentine Gallery*, London and the *Venice Biennale*.

Oudolf prioritises the seasonal life cycle of a plant over usual decorative considerations, focusing on structural characteristics, such as leaf or seed pod shape, present before and after a plant has flowered. He explains: "A garden is exciting for me when it looks good through the year, not just at one particular time. I want to go outside and for it to be interesting in all weather, in early spring and late autumn."

This gorgeous and meditative documentary immerses viewers in Oudolf's work and creative process. From his aesthetic theories about seeing gardens as works of art, to his strikingly abstract sketches and the ecological implications of his ideas, we see how Oudolf has upended conventional notions of nature, public space and beauty.

Award-winning filmmaker Thomas Piper specialises in documenting significant contemporary artists and was inspired to spend over a year with Oudolf to make *Five Seasons*. It has been screened to enthusiastic audiences around the world and Oudolf and Thomas are delighted with the recent response in Australia.

Oudolf has been internationally recognised and is also a successful author. If you would like to know more <https://oudolf.com/>

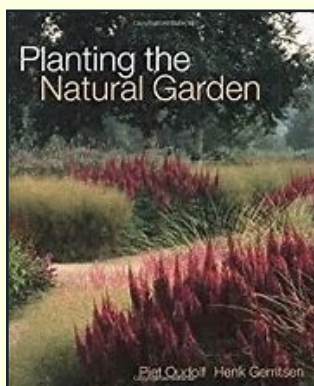
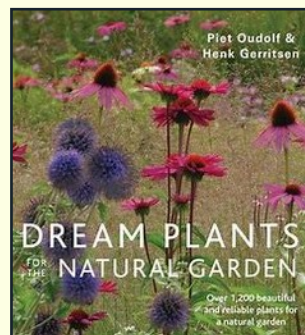
For more about the New Perennial Movement:

<http://www.thenewperennialist.com/tag/new-perennial-movement/>

<http://www.urbangardensweb.com/2014/04/21/garden-designs-new-perennial-movement/>

<https://www.diggers.com.au/garden-advice/articles-and-more/articles/ornamental-gardening/rnla17-returning-to-a-wilder-garden/>

Susan Pilbeam, Friend's Administrative Officer



Above right: four of Piet's gardening books. The top two are available through the Ballarat Library.

Do you live on a rural or semi-rural property?

Be warned! (from One-Who-Knows!)

Bunnies:



*Two little bunnies, bless their souls,
Go into hiding in their holes,
And they emerge a seething mob,
It must have been an inside job.*
Anon.

Ambassadors

*Would you like to take on a new
highly satisfying role for the Friends?*

Contact the Friends Office **5342 9354**

REPORT FROM THE FRIENDS' HISTORY GROUP

Our library, named the *Jessie Scott Library* in honour of our first major donor, is open for business and ready to be borrowed from. Come in and browse amongst the couple of thousand books, or if you are more specific in your needs, browse the data base with the help of our friendly volunteers on a Tuesday afternoon.

Our office assistant, Susan Pilbeam, is prepared to assist on a Friday morning but please send a message by Tues 4pm, (53429354 or send a message via info@fbbg.org.au)

The library has evolved over the last decade from a small shelf to a large holding thanks to the generosity of FBBG members, friends and supporters.

The History Group wish to thank:

Ballarat Field Naturalists,
Leonard Hinchcliffe,
Bruce Holland,
RE & PR Campbell,
Mary Devonshire,
Coolabah Turf Club,
Sue Beck,
Helen & Nigel Long,
Brian Hay,
Antoinette Birkenbeil,
Lorraine Powell,
Ann Pryor,
the Estate of Cecile Glass,
Meryl McLeod,
Joan Garner,
Kit Williamson,
the Estate of Peter Alston via Angela & Colin Cartwright,
the family of Tom Beaumont, and Anne King.

Nancy Nelson,
Zelda Martin,
Scilla Rosenberg (for the publisher),
Elizabeth Gilfillan,
Mrs Byrne,
City of Ballarat,
Valda Murden,
Michelle Coxall,
Shirley McCrae,
Rosemary Selkirk
Jessie Scott,
John Urquart,
Anthony & Katherine
Peggy Muntz,
the Stones,
Bridget Gubbins,

David Wallace,
the Victorian Begonia Society,
Nina Netherway,
Rae Shearer,
Margaret Lane,
Heidi Guildermeister,
Kathleen Hobson,
Jill Jones,
Ballarat Fish Hatchery,
Rosemary Manion,
Janet Dale,
Lewis (granddaughter of Jessie Scott),
T. Reiger,
Susan Rattray,
Margaret Eedle,
Don Moss,
Anne Zoet,
Wes Howlett,
Arthur Paul,
John Garner,



Some of the thousands of 'gardening' books available

Do come in soon and rummage for a book to borrow so you too can curl up on the couch and have a winter's read.

Lorraine Powell, History Group Convenor

Nothing beats a BIG book to read on a winter's day.



Q. Why are husbands like lawn mowers?

A. They are difficult to get started, emit foul smells, and don't work half the time.

IF YOU NEED TO PAY US SOME MONEY:

Please remember to identify yourself, when paying into our bank account and even **what the payment is for**.

A good method is to use your surname and initial/s as your ID.*

Please **state what the payment is for**,
e.g. membership, bus trip, etc.

The Friends' bank details are:
BSB 633 000 Acc. No. 125334615

*** make sure that you clearly identify yourself
when making an electronic payment.**



Thankfully the bus came, so he never had to find out if the old guy was talking about gardening or a medical condition.

The Growers have a lot of *pelargoniums* for sale and many dormant *delphiniums*. We are hopeful of getting a supply of *hostas* soon.

On another more serious matter: we would like to thank all of the Friends who have so generously supplied us with their spare **plastic pots** in the past. Due to a tightening up of disease control measures at the Gardens we are no longer able to accept any more secondhand pots. This new policy comes into effect on July 1. Thanks for your support in the past.



A further change to our sales procedures relates to **plastic bags**. Due to the major supermarkets phasing out single-use plastic bags we are no longer in a position to provide buyers with a bag when they buy from our nursery. **PLEASE BRING YOUR OWN BAG OR BOX!**

**GROWING
FRIENDS**



Yvonne Curbach, Convenor

Remember that rabbits also need to make a living; preferably in somebody else's garden. ()*



MEMBERSHIP REPORT

The Friends are pleased to welcome the following new members who have joined since the last issue of *Wellingtonia*:

Michael Hailey, Sue Sutherland, Rae Sebo, Heather Merrylees,
Elizabeth Shalaby, and Jane Cowles.

Our membership is now 367. However we still have 28 members who have not paid their subscriptions for this year and have not let me know their intentions. **If you are an unfinancial member then this will be the last issue of Wellingtonia that you will receive** as, regrettably, I will have to delete you from our mailing list.



If any member has any doubt as to their membership status, please contact me either by phone at 5335 9052, or email at rdixon578@gmail.com.

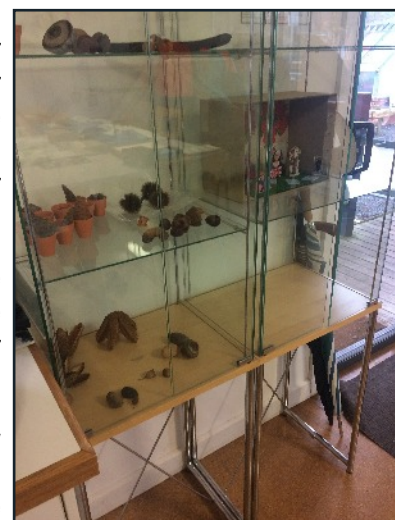
Raoul Dixon – Membership Officer

MORE FROM THE GUIDES GROUP:

NEW GUIDES: Gina Brochie and Warwick Sellens are two new guides and we welcome them to our guiding group. Both of them have made informing themselves about the Gardens a priority for sometime. They have attended our meetings, excursions and joined in on many tours. They have attended all the sessions in the recent U3A course and are well placed to be the confident, informed, hospitable guides that we pride ourselves on providing. Welcome and well done to both of you for your commitment to this volunteer activity.

SUNDAY MORNING TOURS: These will not resume again until Sunday, 2 September. This year we had regular advertising in the local papers and were pleased with the increase in participation in these tours. The May tours were especially well supported and with locals and even had some returning for a repeat tour.

DISPLAY CASES IN THE GEORGE LONGLEY ROOM: We are grateful to Peter Craven, recently retired Ballarat optometrist, for donating two glass cases to display plant treasures. The Guides, Botanikids and ambassadors all like occasionally to show interesting garden finds and the nature creations by Botanikids. Showing the Bunya cone has more impact than telling. The cabinets crowd the George Longley Room at the moment but the cottage will be their future home in the long run.



One of the newly acquired display cases

Terry O'Brien, Guides' Convenor

(* I don't really believe in this; I just put it in to balance the poem on page 5. Ed.)

THE GATEKEEPERS COTTAGE

The story so far of the newest oldest building in the Ballarat Botanical Gardens!

The providence of this little cottage is significant to the heritage and story of Ballarat and the Gardens. It is an original timber cottage of the gold era, circa 1864, an original building in the Botanical Gardens of Ballarat and it was designed by Henry Richard Casselli.

Casselli, it could be said, was the celebrity architect of the day in early Ballarat and worked on many of the important civic buildings including the interior of the Town Hall.

The Friends of the Ballarat Botanical Gardens advocated for the Cottage when it became obvious it was up for sale some four years ago. After many ups and downs the new owners gifted the cottage to the Friends, the Council worked with us to secure its relocation and a kind donation of a secret donor all the stars aligned and finally the Cottage was loaded on to a huge truck and begun its way back home to the Gardens from a few streets away. That was March 2017.

Now in May 2018 City of Ballarat Council so far have: sited; surveyed; relocated a mains gas line; dug deep foundations and created a floating concrete slab; re-roofed and rebuilt two magnificent chimneys! The Cottage is coming back to life and its a joy to see!

We are now working with a heritage architect and the Council to plan for the next stage of full restoration.

The Gatekeepers Cottage will be used to support and house Ballarat BotaniKids, the Friends' educational programs and interpretation displays plus resources for visitors to the Gardens.

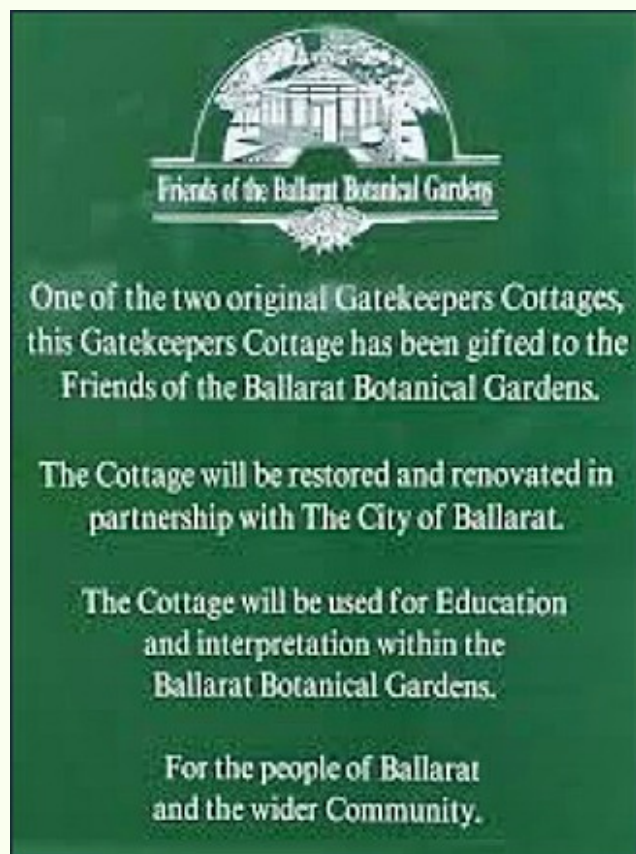
The Friends have sparked interest from Rotary groups, various local community groups as well as State funded heritage funding. We hope more stars line up to fund our next endeavours.

It is hoped the Cottage will be also develop into a beacon of sustainable practices and help educate and support community groups, schools, and families about plants and gardening.

I often think The Gatekeepers Cottage mirrors a story I loved as a little Golden Book, *The Little House*. This story recounts a cottage's story after many owners, families and relocations to being finally fully restored. It settles back happily into the countryside, with a smile on its face, where it began! And so the story continues!

Julie Bradby, BotaniKids and Education Convenor

Below left: new signage at the cottage; below top: the cottage as it was; bottom: the cottage sporting new chimneys and roof.



Sound Advice:

A married man should forget his mistakes. There's no use in two people remembering the same thing.

U3A COURSE 2018: The U3A/FBBG class conducted over eight sessions during April, May and June was appreciated and enjoyed by the two dozen or so participants.



Many presenters contributed to its success of the course and came from varied sources. Thanks must go to the following: **FBBG Guides:** Michael Bird, Trudie Dickinson, Sandie de Groot, John Garner, Elizabeth Gilfillan, Brian Hay, Jane Munro, Terry O'Brien, Wendy Sandiford, Marg Towers; **FBBG History Group:** Lorraine Powell, Kay Crawford; **BBG staff:** Peter Marquand, Donna Thomas; **COB staff:** Kate Gerritsen, David Elms; **Other key presenters from the Ballarat Community:** Fred Cahir, Roger Thomas, Doug Bradby.

The course provided a great opportunity to become more informed about our Gardens. It has much that is of general interest but also provides input for those who want to skill themselves as ambassadors, guides, etc.

Special thanks to **Jane Munro** for keeping the hospitality side of the course running and up to high standards. Participants also certainly showed their appreciation with their contributions to our morning teas.

Thank you all.

Terry O'Brien, Guides' Convenor



Guide Wendy Sandiford conducts a Garden Tour for some of the U3A participants

I dig, you dig,
we dig, she dig,
he dig, they dig...

It's not a
beautiful poem,
but its very
deep! Anon.

Your lawn is always slightly bigger than your desire to mow it.

BALLARAT GARDEN DISCOUNTS FOR MEMBERS

- **Formosa Gardens Nursery** 5% off all stock
- **Grow Master** 5% off plant purchases excl. adv. trees
- **Spot on Pots** 10% off all purchases
- **Blackwood Ridge Nursery** 10% off all purchases

You will need to show your FBBG membership card

"Your mind is a
garden, your
thoughts are the
seeds. You can
grow flowers or
you can grow
weeds.
Don't forget to
water it!"

Anon.

FRIENDS COMING EVENTS:

EXCURSION 31 October, 2018.:

Following on from Kate Toll's talk in August, this excursion will visit her historic garden at MOUNT MITCHELL. After morning tea in the gardens Kate will take us on an tour of the gardens and the restored outbuildings. Lunch (**BYO please**) will be In the Mt Mitchell gardens before we drive to **LAMBLEY Nursery** at Ascot for a tour of the gardens and nursery . Finally off to visit Suzanne Batch at the beautiful garden **HEDGEROW** in Kingston.



Mount Mitchell, Lexton



HEDGEROW, Kingston

MEET at the Claxton Fountain on the Wendouree Parade side of the Botanical Gardens - 9.30 am - returning at 5 pm

BOOKINGS OPEN - on July 10, 2018. Cost: \$40 - Online or at the George Longley Building. **NO PHONE BOOKINGS PLEASE.**

Tickets available at **Try Booking** (trybooking.com). If you are unable to book via the Internet you need to book and pay at the George Longley Building (open Tuesdays between 1.00 and 4.00.). We have reserved 10 seats for those who do not have credit card or Internet access. You can purchase by eftpos (see page 6 for account details) or cash on Tuesday afternoons. Cheques sent to P.O. Box 33W, Ballarat West. 3350.

SPEAKERS SPRING LUNCHEON - FRIDAY NOVEMBER 9, 2018. Keep this date free!!!

DETAILS TO COME....in the Spring *Wellingtonia*. Bookings open for the Luncheon on September 17, 2018.



SNIPPETS FROM THE FRIENDS' HISTORY GROUP:



As we research through the records, we never can tell what will come to light.

Our recent efforts have unearthed some of the excitements of the day. For instance: in 1881 we were purchasing orchids from B Williams of Holloway, England (the leading orchid grower and writer on Orchid cultivation of his day). This was for the Fernery and conservatories of the time, and we provided a postal order for £1.18.4 to cover postage of same.

Blackbirds and thrushes were being brought from England and released in the Gardens in the same period. A Miss Walker received a Wardian Case(*) in recognition of *her very successful effort to acclimatise the songbirds of the old country and thus add another attraction to the Lake and Gardens.*

(N.B in less than a decade we were sending sets of starlings to be released in Sandhurst, as well as Portland, Clunes and other regional centres). Our editor may have something to say about this practice. (**)

Lorraine Powell, History Group Convenor



(A Wardian case is a glass-enclosed box originally used in the transport of live plants over long distances. Created by and named for English botanist Nathaniel Bagshaw Ward, they became extremely popular outside the scientific community during the Victorian era.)*

*(** Editor's comment: Blooming pests! I cannot believe how wanton our 1880's guardians of the Gardens were by allowing such a disgraceful practice as blackbird releasing! Shameful behaviour akin to plastic bag useage today. Couple the blackbird release with the distribution of bellis perrenis seed by Ballarat mayoral candidate Charles Shoppee around the same time and that's where we are today! – see Wellingtonia Spring 2014, page 9 – I'm sure they meant well, but like the rabbit and the fox, pests like these from 'the old Dart' live on today! MB)*



'Garden Cuttings' by Green-Thumb

- Are you aware that there is no *Gardens in Spring* fest this year? The 2017 Committee have disbanded. In November this year the Friends are joining with Rotary to participate in the **2018 Gardens' Designfest**. Volunteers will be needed from amongst the Friends to help with gate entry and with raffle ticket selling. More in the Spring *Wellingtonia*, but the dates are 10 -11 November.
- However, you will be pleased to know that **the annual Speakers Luncheon** will still be held this year. Still on a Friday (10 November). Bookings will open in September for this very popular event.
- G.T. was impressed with the **increase in visitors** participating in the Sunday morning tours in April and May. Might have something to do with the advertising in *The Courier* each Thursday?
- Plastics are officially out at the Ballarat Botanical Gardens. **So keep your POTS at home folks.** They can't be recycled through the Growers any more!
- Incidentally there is a new automatic gate blocking off the driveway that runs through the Friends propagating area next to the George Longley Building. G.T. was in the U3A class at the gardens about a month or so ago when there was a **gas emergency evacuation** which occurred when the gas-line was breached during the gate installation. (See photo at page 12)
- Those **pesky water birds** have been up to their old tricks in recent times. Lots of seedlings and bulbs pulled out as the birds scrounged for food. Beds now comprehensively netted. I think we are winning! (See photo at right)
- Hurrah! Beryl Plummer has volunteered to take charge of the **Western Bedders Group**. She is expecting big things to happen in the Spring!
- Do you know of Kate Toll? She will be our special guest speaker at the **next General Meeting** (10 am on 23 August). Kate's topic will be Mount Mitchell homestead. On Wednesday, 31 November, the Friends will be taking an excursion to this fabulous property.
- The Friends' Committee has been discussing **replacement/s for plastic bags** for people buying from our Nursery. Likely solution? Bring your own bag/s, box or other suitable carrying container (or husband/partner)!
- **Terry O'Brien** deserves great praise for his organisation of the recently concluded U3A eight week course for those who wanted to learn more about Ballarat's Botanical Gardens. Well done TO'B!
Until Spring! **Green Thumb**



Friends' Autumn General Meeting

Our new President Robert Selkirk was brief and to the point in addressing his first meeting. He covered developments regarding the Fernery, the setting up the *FBBG* Trust Fund, which already has \$161,000, and the Gatekeeper's Cottage project.

Those concerned about the demise of *Ballarat Gardens in Spring* were delighted to hear of our a new partnership with *Rotary*, the *Garden DesignFest*, to be held in Ballarat on the same weekend (November 10 and 11). The popular speakers' luncheon continues as a *FBBG* event on Friday November 9.

On behalf of members, he then congratulated the *City of Ballarat* Botanical Gardens staff on their award for *Excellence in Heritage Skills*, in cultivating rare tuberous Begonias. Peter Marquand was clearly delighted with the staff and the award.

Guest speaker Elizabeth Gilfillan shared her interesting insights and beautiful images of her trip through Europe, to attend the *6th Global Congress of Botanical Gardens*, in



Jane Luckock and Elizabeth Gilfillan

Geneva. Fittingly, she began in Padua, at the oldest continuous botanical garden in the world (1545), now a *UNESCO* World Heritage Site. Initially founded as a Herbarium for the University, it includes water gardens, a palm house and numerous ancient trees, several



Morning Tea is always a highlight of the surviving from the 17thc. The new Friends' General Meetings.



Kim Nolan and Heather Merrylees

Garden of Bio-diversity and interpretation centre are attracting more families and young people to the gardens.

The significance of early botanists was also illustrated by the work of Nicolaus Host (1761-1834) in Vienna and that of contemporary botanists and designers in the Bratislava Castle garden restoration.

We travelled with Elizabeth through more heritage gardens in Budapest and Prague, onto Geneva.

Key themes of the conference were the importance of botanical gardens in plant conservation and bio-diversity, sharing knowledge, addressing food security and sustainable development. General concern about loss of plant species inspired global actions, such as the significant trees data base and also reinforced the vital importance of local activities. We can all contribute and communicate through landscape and gardens.

Elizabeth saw more examples of global issues inspiring local activity in England, with seed planting projects by roadsides and in parks. The planting of wildflower meadows, grasses and perennials is part of the international new perennial movement. (see page 5)

SUSAN PILBEAM



President Robert Selkirk (right) chats with Wellingtonia Editor, Michael Bird (left)



Lorraine Powell and Colin Simson

CURATOR'S REPORT WINTER:

I recently had the pleasure of accepting an award at the recent **2018 Ballarat Heritage** awards which recognized the excellence in heritage skills of the garden team whilst maintaining the tuberous begonia collection.

Staff have been growing begonias here at the gardens since the late 1800's basically following propagation and growing methods handed down over the generations.

It is testament to these skills that many of begonias have been in our collection for the best part of a century.

Over the last few weeks of the May the conservatory was closed to undertake maintenance on the misting system and climatic control systems.

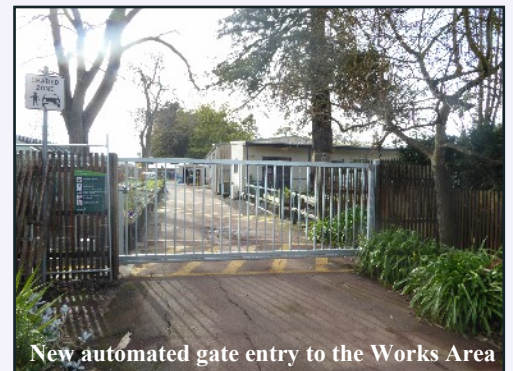
The closure also was an opportunity to have the flooring repainted and to install the winter display.

The re-opening of the conservatory coincided with the Craft Council of Ballarat's annual Queen's Birthday weekend display.

The answer to the question *"why are the beds covered with netting?"* It is to stop the birds from decimating the annuals and bulbs planted in the beds. At this stage the nets seem to be working.

Over the last few years in winter water birds have moved into the gardens from Lake Wendouree feasting on newly planted tulip bulbs and annuals.

Peter Marquand, Garden's Curator



Garden staff members
Alistair (above) and Wayne
(below) at work with the
begonia collection



One third of our Tuberous Begonia Collection has been declared as rare!

Ballarat Botanical Gardens has been growing tuberous Begonias since 1898 and our registered Tuberous Begonia Collection now contains over 240 varieties!

For over 100 years we imported tubers directly from Blackmore and Langdon's nursery in England, and today we still hold over 120 of their cultivars. Many of these Begonias would have originated from a single tuber & have been perpetuated, and protected in our collection ever since.

Simon Langdon from Blackmore & Langdon nursery recently reviewed our Begonia collection list and revealed...

*'This is certainly, without doubt, the most comprehensive collection of our Begonias I have ever come across. You have a lot of varieties that would **definitely not be available anywhere else in the world**; these are not just rare, they are an absolute treasure trove!'*

Simon Langdon

Incredibly exciting news, but along with that comes an increased responsibility to protect these Begonias, along with the many other rare plants in our gardens and nursery.

One of the new measures in place to reduce the risk of pest and disease introduction, is that plastic pots and plants from home gardens will no longer be permitted within the Ballarat Botanical Gardens or Friends Nursery.

We thank you for your support in 'spreading the word' about this change & in turn, helping to protect our Garden's valuable collections.

Donna Thomas, Collections Officer Ballarat Botanical Gardens



Pictured above is an extremely rare begonia: Carol Wilkins of Ballarat. It is one of the seven Begonias that English Nursery Blackmore & Langdon named in honour of the City of Ballarat



FRIENDS in BENALLA

the AAFBG Member's Biennial Conference Benalla 2018

"Cultivating Friends"

Your Australian Association of Friends of Botanic Gardens were delighted to be hosted at the 18th Biennial Conference by the President Robyn Saunders and Friends of Benalla Botanic Gardens and Riverine Parkland.

Starting with a warm welcome evening drinks reception at the beautiful Benalla Art Gallery on the banks of the Lake on the Broken River, Mayor Cr Don Firth welcomed us to the Region.

There were thought provoking presentations including keynote speaker Dr Lucy Sutherland, Director of Adelaide Botanic Gardens and State Herbarium, who spoke about keeping our Gardens relevant to our communities by engaging visitors, Friends Groups, and websites. Lucy argued that these efforts still need to be extended by introducing forums for non-English speaking people; and using Gardens as tools for rehabilitation in mental health and dementia sufferers. Similarly for disadvantaged schools and refugee groups through Red Cross. Gardens can become safe havens presenting a raft of new challenges.

Chris Russell, (Executive Director, Royal Botanic Gardens Vic. Cranbourne Gardens), spoke of improving the biodiversity values of suburbs developing around the Cranbourne site. There are about 50 houses built each week within the City of Casey which puts pressure on plants and animals. This leads to increased genetic isolation, a risk of local extinctions and a decreased ecosystem.

For instance, the Southern Brown Bandicoot, with a strong presence in the region, is under threat from foxes and cats. Fences have been erected with bandicoot gates. Bio-links to the surrounding encroaching suburbs have been developed.

There was also a very interesting talk from John Hawker (Heritage Victoria, Horticulture). John has had close links with Benalla and told the story of these historic Gardens which began in 1859 with a design by Alfred Sangwell with later Guilfoyle influence. Listed

on the Heritage Register of the National Estate in 1995, some significant trees including three very rare *Ulmus x viminalis*.

Patron Dr Philip Moors planted a commemorative *Ulmus minor sarniensis*, (Jersey Elm), in Benalla Botanical Gardens.

Janet Thomson OAM was inducted as the first Patron of Benalla BG.

A highlight of your Association Conference is to be able to focus on Gardens represented, there were 21 Botanical Gardens Friends Groups represented. All were able to promote their Gardens. This is always a popular and informative segment, with hearty Forum participation.

Children from the Primary Campus of the Benalla P-12 College hosted a delicious afternoon tea on Saturday. They all dressed in school uniforms and proudly sold preserves and produce from their *Stephanie Alexander Kitchen Garden*.

The conference dinner is always an opportunity to network and meet representatives from around Australia. Stuart Read, (NSW Heritage Council Horticulture and Landscape advisor and Australian Garden History Society, National Committee Member), gave us a most interesting look at International Botanic Gardens and Heritage Landscapes. A delicious dinner beforehand.

Topping all off, we were treated to an optional tour of the nearby impressive **Winton Wetlands**. These are mostly dry, due to the current conditions. We could also visit a beautiful private property garden, **Belvedere**.

A great weekend meeting interested people. Both faces we know and new ones as well. We were warmly welcomed in support of all our Botanic Gardens.

Elizabeth Gilfillan, AAFBG Secretary

OKI COLOUR LASER PRINTER

High Definition colour quality and built-in network interface, the **C301dn colour printer** offers exceptional value.

Automatic duplex printing and media flexibility make this compact device well-suited to individual or small office use.

Excellent condition.

Has been used for limited hours for label printing.

Still has about half its 3 yr warranty to run

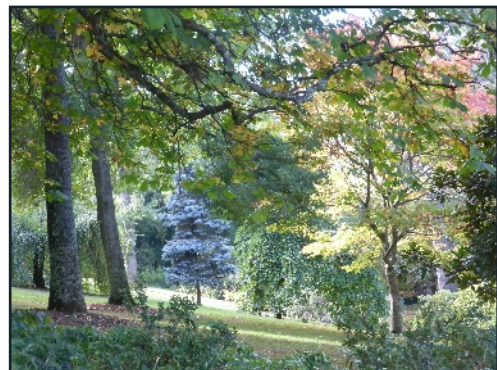
ONLY \$100 ONO

Contact Susan at the FBBG office (534 29354) or info@fbbg.org.au

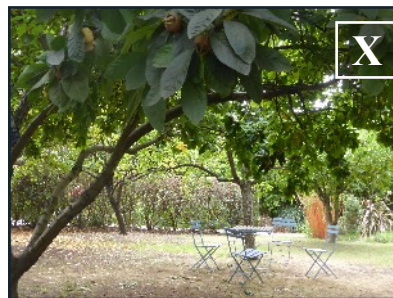


Footprint: 44 cm L x 38 cm W (x 24 cm H)

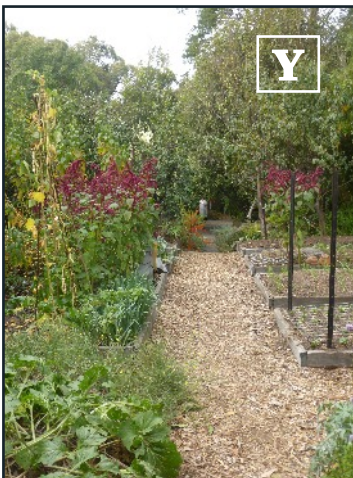
Autumn Bus/Car Excursion: MOUNT MACEDON



Top three:
Wombat
Hill
Botanical
Gardens,
Daylesford
in its
autumnal
finery



Left: Stephen Ryan's home garden *Tugurium*. Note the three photos marked with an X. All show the same clump of 'red' bamboo. Stephen calls this *bambusa duluxii*. Editor was gob-smacked when told later that it was common clumping bamboo painted with RED DULUX paint!



Note in **Photo Y** the use of builder's mesh **horizontally**. Stephen lifts this as the broad beans grow through. Clever!

Bottom three: Ard
Choille, Mt
Macedon. Lovely old
garden very dry at
the time of our visit.



BOTANICAL ART AND COLLECTING WORKSHOP

The Friends Botanical Art Group, in association with the Art Gallery of Ballarat and Donna Thomas of the Ballarat Botanical Gardens, ran an innovative Botanical Art and Collecting Workshop, led by renowned artist Mali Moir.

Botanical Art Group Convenor Valerie Richards has worked



Mali Moir and Donna Thomas briefing the group before collecting specimens.

on the Beckler's Bounty Project with Mali and other artists and botanists over the last decade. Their work was recently exhibited at the Art Gallery of Ballarat, accompanying the popular Eugene von Guerard: Artist Traveller and Animalia Australis exhibitions.



Val Richards showing methods of storage and plant preservation

The two day workshop began at the George Longley Building with a discussion of historical and contemporary methods of collecting and preserving herbarium specimens and why this is so important. Participants looked at various examples and were given an informative handout, including labelling and storage information.

Donna then supervised our collecting in the field, in this case, from the new Indigenous bed at the Ballarat Botanical Gardens. Mali and Valerie then taught participants how to select, scientifically record, press and preserve plant specimens.



Collecting in the new indigenous bed

Participants then moved to the Art Gallery to learn more about accurately depicting and notating plants, beginning with detailed measurements. When precise drawings were made, the importance of colour and texture were considered.



Mali Moir working with the group

Mali demonstrated a wide range of techniques and materials before assisting the group with their works.



The Botanical Art group involved in the workshop

All participants found it a very valuable workshop and some were inspired to find out more about a possible past, present and future Ballarat Herbarium or Florilegium. Peter Freund (Art Gallery Ballarat) was delighted with the successful collaboration and he and Donna Thomas (City of Ballarat) hope there will be more such opportunities.

Susan Pilbeam



The Botanical Art group hard at work at one of their regular Monday sessions

AMBASSADORS: Have you looked in the Conservatory lately? I popped in upon my return and looked at the new display of cyclamens, cinerarias and decorative kale amongst many other plants. This time the plant display is fairly open, providing a great space for Arts and Crafts. What do you think of the display?

Our Ambassadors have worked in pairs assisting the public, and have enjoyed interaction with many international visitors, those from interstate, locals and other Victorians. All seem to enjoy the rostered time which is for once a month, during the weekend for a 3 hour session. We love the ambience of working in the Conservatory, and consider it a privilege to be Ambassadors for our beautiful Ballarat Botanical Gardens. Thanks to Trish Twaits for looking after the group in my absence. Due to the cold weather the Ambassadors do not work for the months of July and August.

We would welcome more people to join us, as this lightens the load for everyone, and gives us extra people to call upon when some of us are away. Beth Dixon Convenor Ambassadors rdixon578@gmail.com 5335 9052



Friends of Ballarat Botanical Gardens Information 2018

Email: info@fbbg.org.au
Website: www.fbbg.org.au

Friends of Ballarat Botanic Gardens Inc.
P.O. Box 33W Ballarat West 3350

Tel. George Longley Building 03 5342 9354

COMMITTEE MEETING TIMES 2018

Meetings are held in the George Longley Building
(rear of the Robert Clark Horticultural Centre):

Committee - 3rd Tuesday of each month at 3:30 pm

Botanical Artists - Mondays 10 am - 3 pm during school terms.

Growing Friends - Tuesday each week 1 pm-4 pm, and the 2nd Sunday every month, 1 pm-4 pm. (During summer also open on 4th Sunday as well.) **Plant Sales** at the above times.

Guiding Friends - 4th Tuesday each month 10 am.

History Group - 1st Tuesday each month 4 pm.

Educating Friends - 2nd Tuesday each month 10 am

Plant Labelling - as required.

2018 FBBG COMMITTEE AND AREAS OF RESPONSIBILITY

POSITION	NAME
President	Robert Selkirk
Vice President	John King
Past President	Raoul Dixon
Secretary	Susan Rattray
Treasurer	Bruce Holland
BotaniKids/ Education	Julie Bradby
Events and Speakers	Carole Haines
General member	Elizabeth Gilfillan
General member	Stephanie de Boer
General member	June Cheetham
General member	Nonnie Tennant
Growing Friends	Yvonne Curbach
Guides	Terry O'Brien
History	Lorraine Powell
Hospitality	Doff Kemp
Membership	Raoul Dixon
Newsletter Editor	Michael Bird
Western Bed	Beryl Plummer
Ambassadors	Beth Dixon (non-Committee)
Botanical Art	Valerie Richards (non-Committee)
Engraving Plant Labels	Joy O'Brien (non-Committee)

FRIENDS' COMING EVENTS



GENERAL MEETING -

10am 23 AUGUST, 2018: Kate Toll will be our Guest Speaker. Kate will give a talk on the beautiful homestead - **MOUNT MITCHELL** a stunning historic homestead within the renowned Pyrenees wine region of Victoria.

EXCURSION - Wednesday, 31 OCTOBER.

Following on from the August talk, this excursion will be to visit **MOUNT MITCHELL**. Kate will take us on a tour of the property. We also plan to visit Lambley Nursery (Ascot) en route to **HEDGEROW** at Kingston.

SPEAKERS LUNCHEON - Friday, 10 November, 2018. Bookings will open in **early September**. Further information in the Spring Wellingtonia.



CHRISTMAS NIBBLES AND DRINKS - 22 NOVEMBER 2018.

This newsletter is produced and distributed with the generous financial assistance of the City of Ballarat.



Photo credits: Thanks to Margaret Thomas, John Heath, Robert Selkirk, Elizabeth Gilfillan, Peter Marquand, Tim Entwisle, Julie Bradby, Susan Pilbeam, Terry O'Brien and Michael Bird for providing the photographs/illustrations used in this edition. Ed.

Disclaimer: The views expressed by contributors are not necessarily those of the Friends of the Ballarat Botanical Gardens or those of the Ballarat Botanical Gardens. Neither the Friends nor the Ballarat Botanical Gardens accepts responsibility for statements made or opinions expressed, although every effort will be made to publish reliable and accurate information. **Contributions for Spring Wellingtonia 2018 are due by early September please.** Michael Bird, Editor.
Editorial Committee: Robert Selkirk, Elizabeth Gilfillan, Susan Pilbeam and Michael Bird.