

# Wellingtonia



ABN 32 346 573 092 ACN 3465 info@fbbg.org.au www.fbbg.org.au

Tel. George Longley Centre 5342 9354 PO Box 33W BALLARAT WEST 3350

PP Number 100020008

## NEWSLETTER – SPRING 2015

### From the President's Desk...



### FRIENDS PRESIDENT'S REPORT – SPRING 2015

As I write this, the sun is shining, the sky is blue, trees are in blossom and there is the promise of warmer weather ahead. What a relief after what seems to have been a long drab winter.

Maybe we have all been hibernating, but there is comparatively little to report on for the past few months. Everything is ticking along nicely however with our various groups all continuing their activities successfully. I should mention in particular the Educating Friends group and the **BotaniKids program** under the direction of Julie Bradby (*page 10*). Working with the Education Officer, Donna, they have developed a most imaginative school holiday program for the September holidays which looks very exciting.

One new venture is the **reinstallation of a plant trolley** outside the Conservatory to augment our plant sales. As members will remember, this was a staple item in our nursery activity when the Conservatory was permanently staffed, with the staff physically moving the trolley in and out of the Conservatory each day, and also handling the cash sales for us. With the Council decision to no longer maintain staff in the Conservatory, this left us in a bit of a quandary as to what to do. Finally we have decided to operate the trolley on an honesty box system, with a lockable cash box fixed to the trolley and appropriate signage explaining our involvement.

Peter has generously arranged for staff to move the trolley in and out of the Conservatory during week days, and to move it out on weekends and public holidays provided that we can arrange to move it back into the Conservatory on those days. So far the system is working well with good sales being generated. We had ten plants taken and not paid for one

weekend recently which was of concern, so we will continue to monitor this arrangement.

Also, thinking of things Conservatory, we have finally taken the first steps to **establishing a display presence in the Conservatory**. We are currently working with Council staff to design a display which will explain what the Friends are all about, show the *Tree of the Month*, have our various leaflets available from that location, and promote any upcoming activities with which we are involved. It should be a valuable means of advertising and seeking new members – something we are always encouraging.

We have now resurrected the **Corporate Membership** category, with an initial mail out to a small number of companies and organisations seeking their support through a membership. Although this will assist in our fund raising (Corporate Membership will be \$100 per year), the primary aim is to develop stronger links with industry throughout Ballarat so as to further promote our Gardens and, of course, the Friends.

The **Fernery redevelopment** is of course our major activity. This will be reported on by Elizabeth (*see page 7*). Inevitably with such major Council projects there are many issues to be addressed and arrangements to be made before works actually commence but we look forward to an early start in the next few months.

It is also time to belatedly welcome our **new Administration Assistant**, Chloe Hewitt. Chloe started working on a temporary basis with us a few months ago when Beryl Plummer was unable to continue in her dual role of Secretary/Administration Assistant due to medical issues. Beryl continues as Friends Committee Secretary but has now relinquished the paid role of Admin Assistant and Chloe is now permanently in that position. Members can meet Chloe any Tuesday afternoon when she works in the George Longley Building.

Finally, we have a very enjoyable **bus trip organised for October** (*see enclosed flyer and page 8*). I would encourage members to take advantage of this opportunity to see two great gardens at Mawalok and Eurambeen.

Raoul Dixon  
President



#### FBBG Patron:

Prof. Tim Entwisle,  
Director and Chief  
Executive, Royal  
Botanic Gardens  
Melbourne.

See page 4 for Tim's Blog...

#### WHAT'S INSIDE THIS ISSUE?

What have the Guides been up to? Page 2  
Tim Entwisle's Blog; Growing Group P.3  
History Group; Membership and U3A course, P.4  
Curator's Report P.5  
On the Road ... with Beth and Raoul, P.6

Fernery Re-Development; Guides Conference; Poetry P. 7  
Ballarat Gardens in Spring, P. 8  
Bot Art Group; Australian Assoc. Friends 2016 Conf, P. 9  
BotaniKIDS P. 10;  
Members' Notices, Pp 11 - 12



## Guiding Friends Report: There were few demands for guided tours this winter; however the group recommenced duty on the first day of Spring with one of those rare days that was bright and blue-skied.

Several guides have travelled themselves during the winter and we look forward to hearing about gardens visited at our regular monthly meetings. Our understanding of Ballarat Botanical Gardens (BBG) is heightened when we are able to compare and contrast aspects with these other gardens.

If you look beneath the grill covering the drain on the path near the statue of Bacchante you will see "a cypress knee" of *Taxodium distichum* (Swamp Cypress). These conical shaped roots that protrude up are a mystery. Their function has intrigued botanists for a long time.

A range of hypotheses have been put forward; the two main ones are that they help in the aeration of the root system (pneumatophores, root snorkels), or they assist in anchoring and stabilizing the tree in wet conditions. Research so far has not shown us conclusively what the knees are for and the hypotheses outlined do not hold up when scientifically researched.

Some suggest that the cypress knees evolved in response to past environmental pressure that no longer exists. If this is so the knees fulfil no function now and whatever function they had in the past is lost in time. In the photo (*above right*) taken recently in the VanDusen Botanical Gardens in Vancouver of a Swamp Cypress, the knees were a lot more prevalent than the occasional one we get in the Ballarat Gardens where the Swamp Cypress are grown on dry land.



Cypress knees in VanDusen Botanical gardens in Vancouver

In the VanDusen gardens these trees had been planted alongside a water course, more closely aligned to the wetlands of SE USA where these Swamp Cypress come from. The Swamp Cypress is Louisiana's State tree, at home in the bayous of Louisiana. I have not got close enough to the Swamp Cypress on the island in the BBG North Gardens wetlands to observe whether there are more cypress knees protruding on that one.

We have several *Sequoia sempervirens* (Coast or Californian Redwood). In local nurseries I have seen the prostrate form available for sale. In the VanDusen Botanical Garden the weeping cultivated variety was displayed (*see photo left*).

The VanDusen Botanical garden in Vancouver is home to over 7,500 kinds of plants from around the world. One of the cultivars that demanded attention was the Snake-Branch Spruce. (*right*)

It is interesting to note the additional information available on some of their labels.

To help support the many rare and beautiful trees in the VanDusen Botanical garden

they have an Adopt-a-Tree program. Trees are adopted for a period of 20 years for a minimum donation of \$2000. A gold-coloured plaque inscribed with the botanical and common names of the tree and the dedication are placed on the tree. Dedicatory text is limited to statements such as "Adopted by", "Adopted for", "Given by", "Given for" or "For" followed by the name of the person for whom the tree is adopted.

British Columbia has had a prolonged drought and into stage 3 water restrictions. This summer temperature records across the province were broken and it has been their worse fire season since 2003. Climate change is a growing concern in British Columbia and on visits to natural history centres, museums and parks there was a strong emphasis on education about the impacts and possible scenarios with climate change.

There are winners and losers in these scenarios. One of the tree species that will expand its distribution will be the *Quercus garryana* (Garry Oak), a native oak. It is drought tolerant and its spread and survival will be important for many more species of plants and animals associated with it.

Other trees such as the Western Red Cedars will likely spread northward but probably not fast enough to keep pace with tree mortality in the south. These trees have to respond to changing patterns of water availability and also the expected warmer temperatures that will enhance the infestation of forest pests (e.g. spruce budworm, mountain pine beetle). There was lots of sobering information but good to see the education action being taken on global warming.

**Terry O'Brien, Guides Convenor**



### SNAKE-BRANCH SPRUCE

*Picea abies* 'Virgata'

The curious habit of this cultivar represents an abnormality of Norway spruce occasionally found in the wild and among garden-raised seedlings. *Virgata* is Latin for 'twiggy' and refers to the tree's characteristically long and 'snake-like' branches. The cultivar was first seen in France prior to 1853 and has since been found throughout the species' northern and central European range.



Pine Family – Pinaceae







## FROM TIM ENTWISLE'S BLOG Tuesday, 4 August 2015

### Caster Oil Plant's explosive release of toxic seed



Caster Oil Plant, native to the Eastern Hemisphere, probably Africa, is now a rampant weed in much of the world. In Victoria it is only occasionally established, near gardens from which it escapes, but it extends through a broad strip of southern and eastern Australia.

It's a very successful weed because it grows vigorously in a range of habits, flowers much of the year, produces copious seed after only one year's growth and that seed is distributed by animals, water, on our shoes and just by itself up to five metres following an explosive release from the capsule.

*Ricinus communis* belongs to the plant family Euphorbiaceae, most of which have odd flowers. Generally if you can't work out what family a plant is in, and its flowers are a bit wacky, it's a euphorb. Like most euphorbs, Caster Oil Plant has two kinds of flowers, girl ones and boy ones. The boy ones are packed full of branching stalks topped with anthers full of pollen. They look like this (*below left*)



The 'girls' look almost medieval, like some kind of tiny mace decorated by a fancy red feathered crown. The *feathery crown* is the style, where the pollen lands to pollinate the flower. The

spines are ornamentation, perhaps to ward of predators (and see **toxins** below).

I gather that on the right day you can hear these capsules split, sending seeds ricocheting off the ground, signs and your head.

The seed contains Castor Oil, used since at least 4000 BC (based on

seeds found in Egyptian tombs) for lamp fuel and god bothering. In generations just a little before mine it was also promulgated as a laxative, even being used in extreme dosage for torture during the Second World War by Italians under the control of Mussolini.

Before you rush out to purchase a bottle for personal use, do read on below regarding its toxicity.

Cleopatra reputedly used it to whiten her eyes. Again, see below regarding toxicity and note that it reputedly also causes temporary blindness on contact with eyes. In China it has been used for dressing wounds as well as various internal complaints.

**Toxins:** By most accounts you must avoid applying the plant to any part of your body, or vice versa.

The culprit is something called **Ricin**.



Ricin is found throughout the plant, but more so in the seed. This molecule has two parts, one to get it inside an animal cell, the other to replace an essential part (an enzyme) in the pathway to producing protein within a cell. All this means that you die if you consume more than about half a gram of pure ricin if I've done my maths correctly.

However it turns out that it is more difficult to be poisoned than it seems. It is extremely emetic, which means if you ingest any you are most likely to vomit it back out again. The molecules are large and difficult to get into an aerosol, so you are unlikely to inhale it.

**Which is all very well but I'd recommend you definitely don't eat, drink or inhale it. Remember that pests making the mistake of eating the plant usually don't eat anything again.**

You can read more from Tim's blog:-  
<http://talkingplants.blogspot.com.au/>

**Editor's Notes: Some Australian Facts: Castor oil plant is declared a weed which must be controlled and not introduced into the Northern Territory.**

The Victorian Government's Agriculture website lists the plant as being "poisonous to horses" with the following Clinical Signs -- "*Nervous signs, colic, death!*"

<http://agriculture.vic.gov.au/agriculture/livestock/horses/emergencies/horses-and-drought>

The NSW Government warns: '*Castor oil plant is highly toxic to humans, capable of causing serious illness and death. The flowers, leaves and seeds are poisonous and eating only 2-8 seeds can be fatal. Ingestion causes a burning sensation in the throat and mouth, abdominal pain, bloody diarrhoea, fever, convulsions, and then respiratory and cardiac distress and failure. Temporary blindness may occur if the sap is squirted into the eyes.*' <http://weeds.dpi.nsw.gov.au/Weeds/Details/32>

**Good news for gardeners!** Our plant trolley is back in front of the conservatory after many months of absence. Plants are selling well with the weather warming up. We need 5" and 6" pots again, so please, if you have any, we would love to get them from you. Also, with **Springfest** coming up in November, we need more plastic bags too.

**Yvonne Curbach, Growing Friends Convenor**



**MEMBERSHIP MATTERS!** We welcome the following 32 new members who have joined us during 2015 -

Rhonda Adams, Sue Bennett, Kerrin Boyd, Jan Carroll, Denise Cunningham, Ged & Margaret Cutter, Peter Dodd, Frances Elias, Pamela Foulkes, Karen Garratt, Peter & Yvonne Gibbs, Beverley Gray, Elizabeth Hale, Greg and Jenny Hughes, Anna Krohn, Gabrielle Kuckhahn, Margaret McBean, Serena Mitchell, Cheryl Morris, Bill O'Driscoll, Pauline Porteous, Graham & Judy Reynolds, Annette Rohr, Sue Taylor, John & Marlene Tozer, Chris & Glenda Phillips, Kaye West and Kaye Yean.

Our total membership currently stands at 330.

New members are always welcome and we encourage members to nominate a friend for membership. (*Would make a great Christmas present! Ed.*)

Raoul Dixon, Membership Secretary



*Gardening requires a lot of water - most of it in the form of perspiration!*

**HISTORY GROUP:** In October, Lorraine Powell will be presenting a paper at the Australian Garden History Symposium as part of the annual AGH Society Conference in Adelaide. Below is a summary of Lorraine's presentation:

The paper on the theme: **'Garden to Table'** will examine the contribution made by the Ballarat Botanical Gardens (BBG) to the growing of food and compare the efforts made at the BBG with those made locally and even internationally. There were many lost opportunities, even at a local level.

The BBG was established in the wake of a tremendous population influx from across the globe. Nearby mainly agricultural settlements were swamped by the gold-driven boom. The new urban-focussed population quickly detached itself from the concerns of its agricultural hinterland.

Regionally, wealthy landowners established their own orchards and grand gardens of botanical merit, even giving parts of their ground to be used by the Ballarat Horticultural Society for the trialling and testing of new varieties of fruit trees, etc. for suitability in this region.

Lorraine intends to cover the development of, and the influences on, the BBG. Lake Wendouree is traced from its aspirational beginnings to the present day. The *'Gardenesque'* pleasures of a Melbourne Botanic Gardens (as reimagined under Guilfoyle) became the ideal, and Ballarat citizens promenaded amongst the young exotic trees. A newly enlarged lake became a place for pleasure and leisure rather than the productive food gathering site as it was for the indigenous

population, this despite having the oldest **Fish Acclimatisation Society** in Victoria.

There were several moments when the BBG rose to the challenge of food production, but often exterior pressures were the catalyst, such as in 1942 when the *'Dig for Victory'* campaign resulted in 32 bushels --that's over 800kg -- of onion seed (provided by 200 separate growers) was sent to Britain. This included 20lb (9kg) of seed grown at the Gardens.

Opportunities for community engagement were missed even the 1980s when the BHS established a community garden at the neighbouring Lakeside Hospital (*below*).



(Left)  
Historic  
photo of  
the  
Lakeside  
Hospital

### **BALLARAT U3A MEMBERS AND FBBG MEMBERS -**

*a course to get to know more about Ballarat Botanical gardens!*

We have run this course now for three years and we have been encouraged to run it again. There are different topics and different presenters in each session. Next year all sessions will be in the Robert Clarke Horticultural Centre and this will make catering and presentations a lot easier to manage.

Next year the 12 sessions will be on the **first, third and fifth Thursday mornings** between 10am and 12 noon. The dates are: Feb 4, 18; March 3, 17, 31; April 7, 21; May 5, 19; June 2, 16 and 30.

Participants in the course will be exploring the history and development of the Botanic gardens. We will look at the changing role of the Botanic Gardens today - experiences, challenges and directions. It is an ideal opportunity to get to know more about our heritage listed botanic gardens.

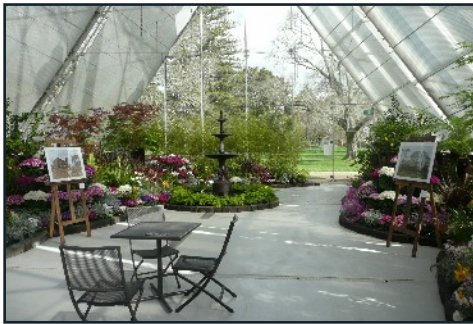
Contact Terry O'Brien (0438 459504) or email [tobrien1@tpg.com.au](mailto:tobrien1@tpg.com.au) if you would like to join this program in 2016.





## CURATOR'S REPORT SPRING 2015

The late winter early spring display in the Conservatory includes primula, cyclamen, cineraria, deciduous trees, fruiting citrus and spring bulbs. The gardens are also hosting a Photo Biennale exhibition in the Conservatory and Statue Pavilion.



**The Spring display in the Conservatory and Photo Biennale work of Vanessa Brady**

**Bunya:** As part of the pre Begonia festival check of trees within the gardens a crack was discovered in the trunk of the southern Bunya at the start of the Prime Ministers avenue. Safety fencing was installed at that stage to ensure the safety of visitors to the gardens, whilst further testing and assessment was arranged.



**Bunya on the left has serious damage and will be trimmed and a collar added. On the right the second Bunya lost its top some years ago due to storm damage and was later trimmed off.**

Testing results suggest that the tree requires some weight reduction and the installation of a steel collar around the trunk which will hopefully ensure that this important tree

remains a part of the gardens collection. The collar is to be installed in coming weeks.

**Species Begonia collection:** The Ballarat Botanical Gardens have two registered plant collections – the '**Tuberous Begonia**' collection (of Begonia festival fame) and the '**Species Begonia**' collection (equally interesting but not so widely known).

The Species Begonia collection consists of over 350 varieties, are evergreen & more commonly grown for their beautiful foliage rather than their delicate flowers.

The botanical gardens team has commenced the process of formalising a plant collections policy in line with BGANZ (Botanical Gardens of Australia & New



**Dormant begonia corms in the BBG collection**



**(Above & right):** Two of the many begonia leaf forms

Zealand) guidelines.

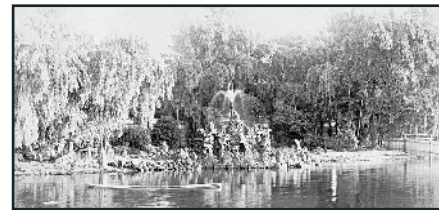
The nursery teams have recently undertaken a detailed audit of the collection, and are currently repotting and labelling the entire collection. Detailed management and interpretive signage plans will be created to better document display & promote this significant collection.

This is an important & exciting step forward in addressing one of the recommendations of the 2014 'Botanical Gardens Visionary Plan' by Mark Richardson.

**Zoo shelters:** The Ballarat Zoo was established in 1912 upon the bequest of Mr. Henry Ben Jahn within the Ballarat Botanical Gardens. The Zoo was closed in 1959, a number



of concrete shelters still remain in the North Gardens. One of the shelters was extensively damaged last year; a specialist contractor was engaged to undertake stage one repair of the structure (above). Stage two repairs have recently been completed to return the structure to its former condition.



**Lake Fountain:** Work has commenced on the re-commissioning of the **Rustic Fountain** in the south east corner of the Lake. The fountain has had the spray head removed

for cleaning and repairs and is in a good condition for being over 120 years old, at some stage the jets had been filled with solder; this has now been removed so the original fountain head can be put back in place. Electrical cabling will be installed to allow a pump to be installed as the original fountain was gravity fed with water from the Gong. Following this landscaping works will be undertaken by Council's horticultural and apprentice staff to complete the precinct.

**Rose workshop:** During winter, the Botanical Gardens Team hosted the first **Conservatory Workshop on Roses**.



Commencing in the Conservatory, Botanical Gardens team leader Glen Fisher shared some of his 25 years of horticultural experience with an overview of growing, planting and maintaining roses.

Twenty enthusiastic participants then divided into smaller groups and enjoyed practical outdoor demonstrations of Rose pruning in the Botanical gardens by the horticultural team. People made the most of the opportunity to engage with staff expertise and seek answers for all their tricky rose questions.

This was the first in a series of workshops being planned to further engage and educate the wider public within the Ballarat Botanical Gardens precinct.

In recent weeks painting contractors have painted the inside of the craft cottage and commenced painting of the four Lych gates. The Statue Pavilion, external of the cottage and staff facilities in the nursery will also be painted before the end of the year.

**Peter Marquand, Curator BBG**

# ON THE ROAD...AGAIN

Recently Raoul and I left Ballarat's winter behind, heading North. During our travels we visited the Australian Botanical Gardens at Mt. Annan (Sydney), Noosa, & the Gold Coast, plus the Arboretum in Canberra.

First visit was the Canberra Arboretum. This is being established on what was originally a pine plantation which was destroyed in the devastating fires of 2003.

We participated in a guided tour, which, due to the inclement weather consisted of a talk in the Visitors Centre, where we learned about the the growth of different tree species. They have embodied a concept of planting 100 trees for each of 100 forests from all over the world. Establishing this in one environment is a big ask.

All a learning process, where some tree groups have flourished, and others groups have lost many trees. For example over 800 Wollemi Pines were planted, and just over 80 have survived. The trees had been looking healthy, even through a dry period. Then a heavy rainfall in a short time, and the trees did not tolerate it. In fact, the trees on the higher slopes survived, while the lower trees did not. This is contrary to what one would expect, seeing that a remnant group of these trees was found in a deep gorge in the Blue Mountains.

Another surprise was to learn that not all Wollemi Pines are dioecious (male and female cones on the one tree) as is the one in our Botanical Gardens, but sometimes they are monoecious. This was our second visit to the Arboretum and it is a rewarding experience.

Mt Annan was busy as it was a Sunday, and large family groups were there picnicking in nice weather. Interesting to walk around large zones of particular plants groupings.

Noosa Botanical Gardens are 20 kms from Noosa closer to Cooroy in the hinterland. The setting is beautiful, beside Lake .MacDonald, which provides a perfect backdrop.

Large trees and beds growing with semi tropical vigour. We were there on the day that their Friends meet. They have a membership of 15 people, and are hands on doing all the work in the gardens except for the heavy work of falling trees etc. which is contracted out. Only one person paid by the Council, and the Friends do all the rest! They were busy



working,so not much time for talking. They have an interesting policy, where their hours of work are added up, then the Council credits them with \$20 per volunteer hour which is then put back into the Gardens as a grant.

Gold Coast Botanical Gardens was a great visit. Elizabeth arranged for us to meet Kate Heffernan and her partner Allan Donaldson. What a good time we had comparing the Friends policies, strengths and weaknesses, plus a two hour tour of the gardens.

Kate is a trained teacher, plus trained in Landscape Gardening. She does a talk back garden session every Saturday morning. It is much due to her persistence and vision that the gardens exist.

These Gardens are a combination of large water areas, lawns, picnic areas, and native plantings particularly in the local environment, which goes from mountains and volcanic soils, grass plains, swamp areas, and coastal sandy areas. All beautifully designed.

The setting up of the Gardens stated from the onset, that the gardens were to be Community driven, so this is different to our concept. The Friends run the Visitors' Centre, and they had a stunning floral arrangement on a counter. This is changed each week, and done by a group of the Friends who will do floral arrangements for functions, and raise some money for the Friends. As yet they are not doing plant sales. They were busy setting up for a weekend around Science Week with many activities for parents and children.

They have 400 members, and Kate and Allan often source plants for the gardens over many nurseries around Australia. Thanks to two lovely people, Kate and Allan. Yes we did more than look at Botanical Gardens, but it added to our holiday.

**Beth Dixon, member of the Friends Guiding Group.**



From the Friends of Maroochy Regional Bushland Botanic Gardens Newsletter

**Guess what? .....the wooden fence erected between the Friends Nursery (plant sales area) and the driveway leading to the Gardens' Workshop area is there for a reason!**

**Members and visitors MUST NOT access the Friends' area via the driveway!**



**Please use the single wooden gate at the rear of the Robert Clark Horticultural Centre.**

**This is an on-going safety issue. Please use the gate.**



## Fernery Re-development Project

The most recent meeting of the Project committee was held 31 August. John King (Friends Vice President) has been added to the group, and the City of Ballarat has appointed a new Project Manager, Rob Siemensma.

Work continues including the preparation of reports, tree condition assessment and a feature survey in progress. In addition, tender specifications are being formulated for the architectural design to be prepared and will be sent out soon.

New public information boards are also to be installed. (The existing ones are out-of-date, and have been temporarily covered).

FBBG presented some funding ideas including an International Speaker event in March 2016 featuring Toby Musgrave who is being sponsored by Botanica Travel. Federal and State government funding is also being investigated.

A name for the new building is yet to be announced. Andrew Laidlaw has firm ideas, and we are waiting for his appointment to the full project. In the meantime he will be appointed to start on the Sensory garden very soon.  
**Elizabeth Gilfillan**

*"It is not enough to be busy; so are the ants. The question is: What are we busy about?" – Henry Thoreau*

## Australasian Conference of Volunteer Guides in Botanic Gardens

The Royal Botanic Gardens, Australia's oldest scientific institution, will host the 14th **biennial Australasian Conference of Volunteer Guides in Botanic Gardens** in Sydney, 21-25 September 2015. Two of the Ballarat guides will be attending.

These conferences provide opportunities for exchange and exploring issues that are current for Botanical gardens and help us on a local level to develop appropriate responses to the issues we face.

Exhibits on display during the conference will include specimens collected by Banks and Solander, and Burke and Wills, as well as a First Edition of Darwin's *On the Origin of Species*, a 16th century *De Materia Medica* by

Dioscorides and other treasures.

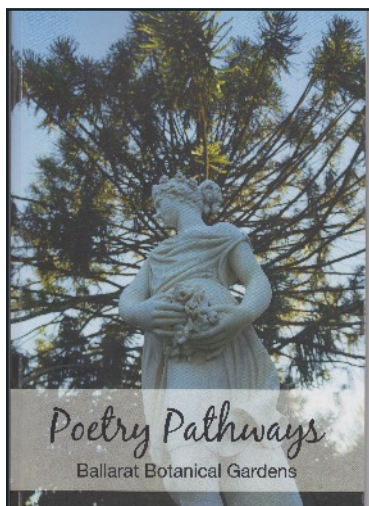
Excursions are also offered to the Australian Botanic Garden Mount Annan, site of PlantBank, or to the Blue Mountains Botanic Garden Mount Tomah.

The next Volunteer Guides in Botanical Gardens conference will be in **Canberra in 2017**. Recently we had two guides from King's Park, Perth, WA, guided through the Ballarat gardens, and they were very keen to let us know that their Botanical garden will be hosting the Guides conference in 2019 and encouraging us to attend. Keep it in mind. **Terry O'Brien**



## ARE YOU A POET AND DON'T KNOW IT?

You may have been lucky enough to acquire a copy of *'Poetry Pathways - Ballarat Botanical Gardens'* which was published for the 2015 Begonia Festival by the Ballarat Writers group. (See photo of cover right). The book features work from over 20 writers, and was co-ordinated by Suzanne Gatz. Heather Roche is the Chair of the Ballarat Writers group.



If you didn't obtain a copy, you may have seen or heard some of the poems being read aloud during walking activities around the Gardens over the Festival weekend.

The poem by Pamela Miller (right) has been reproduced with permission. If you like it, others may be provided in future newsletters.



Check out: [www.ballaratwriters.com](http://www.ballaratwriters.com)

## BRONZE HEADS - THE PRIME MINISTERS' WALK

Fading pale-red carpet leads us down the avenue  
Past shaped bronze heads of those who shaped our nation.  
Ministers who led; who were the Heads of Government  
Heavy heads that wore crowns of leadership  
Crowns of thorns it could be said,  
For some of them were crucified –  
By colleagues, by media, by voters,  
By the weight of office.

Dozens governed; some like the nearby redwood, cast a long shadow.  
Others faded. Shaded.  
Some right – some not!  
Some respected. Some not.  
Eight days to eighteen years in the top position.  
Train driver, teacher, lawyer – they stand,  
Equal – as bronze busts.

Green velvet covers the ground; nearby tall sentinels guard.  
A glimpse of the lake reflects blue of sky or red of sunset.

Step up citizens.  
Put yourself on the plinth – the chopping block!  
Could you govern better?  
Oh yes! Of course we all could!

The course, taking us from Barton, guiding us down a century,  
Might lead us to reflect  
On exotic giants, facing shadows, and bronze heads.

**Pamela Miller**



# Upcoming Events:

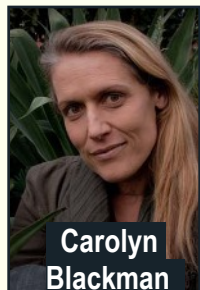
"Always do right. This will gratify some people and astonish the rest." – Mark Twain

## Ballarat Gardens in Spring

13 -15 November 2015

Fingers and toes are crossed for a great weekend, weatherwise for our **8th annual Ballarat Gardens in Spring event**. Brochures have been printed and we are starting to distribute them with many event calendars also listing our program.

We are again holding the Speakers Luncheon in the Robert Clark Centre with lunch served in the Conservatory. A fabulous speaker line up has again been secured (*see photo line-up below*) so be sure to complete your registration, as numbers are limited for this inspiring and enjoyable day.



**Carolyn Blackman**

With the 2015 Archibald Prize being hosted in Ballarat at the same time we are hoping for additional guests to visit the open gardens and as well as the Ballarat Botanical Gardens and Lake precinct.

Five gardens will be opened for visiting on November 14 and 15:

- Armstrong Garden – Carlton Street
- Fraser Garden – Talbot Street Sth
- Cameron House – Humffray Street Sth
- Todd Garden – Maxlyn Avenue
- Kylie Rose's Garden – Scarsdale



**Robert Boyle**

Full details are available in our brochure or visit the Friends webpage - [fbbg.org.au](http://fbbg.org.au)

Enjoy the warmer weather and let's hope for some good spring rain!



**Criss Canning**

**Helen Todd, Committee Ballarat Gardens in Spring 2015**

**(Brochures are available at businesses around Ballarat and from the BBG).**

### Open Garden INFORMATION

Ballarat Visitor Information toll free on  
**1800 44 66 33**  
Maps available at all open gardens

[WWW.FBBG.ORG.AU](http://WWW.FBBG.ORG.AU)  
[WWW.BALLARATOPENGARDENS.COM.AU](http://WWW.BALLARATOPENGARDENS.COM.AU)

#### PROGRAM ENQUIRIES

Mobile: 0407 324 466  
Email: [toddsgn@fbbg.net.au](mailto:toddsgn@fbbg.net.au)  
Follow on @toddsgn

#### MRT, BOURNE VISITORS

**Special Guided Coach Tour - Sunday 15th November**

Visit five open gardens with a local guide. Tour starts at the Ballarat Train Station for passengers arriving on the 11.02am train from Melbourne and will return for the 4.19pm departure.

\$30 per person includes garden entry & bus tour. Bus tour subject to sufficient numbers.

Kindly sponsored by Ballarat Regional Tourism.

**Bookings and pre-payment essential - Phone: 0407 554306**

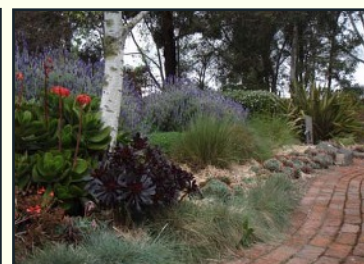
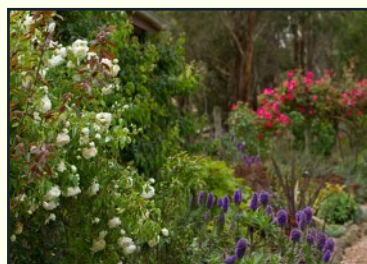
Image Source: Phillips Fox 'A Love story' Art Gallery of Ballarat

## Ballarat GARDENS IN SPRING

13TH - 15TH NOVEMBER 2015



FRIENDS OF THE BALLARAT BOTANICAL GARDENS



**What awaits you! Scenes from two of the Open Gardens**

Enclosed with your copy of the Wellingtonia you will find a flyer advertising the up-coming Friends Bus Trip (October 26) to two fabulous gardens to the west of Ballarat: Mawallock and Eurambeen. Cost \$40. Departs 8.30 am.



Travel generously sponsored courtesy of Gold Buses, Ballarat.

**Eurambeen Historic Homestead and Gardens is an Historic Landmark of Victoria's rural heritage, built in 1850 with a three acre garden designed by Edna Walling (1927). Originally named 'Mt. Cole Station', 1840. The blue stone wool-shed was built in 1845. The present homestead was begun in the 1850's. The present owners are restoring the property.**



**Eurambeen**

**First imagined 100 years ago this sweeping station garden has since grown in charm and significance. The magnificent garden at Mawallock, near Beaufort in western Victoria, was laid out in 1909 by William Guilfoyle — the year of his retirement as director of Melbourne's Royal Botanic Gardens — and is arguably his grandest private work.**



**Mawallock**



# Upcoming Events:

## THE BOTANICAL ARTISTS:

The Botanical Art Group has been extremely busy painting for the Art Exhibition to be held in the Gardens' Conservatory from 8 to 15 November.

The official Opening will be by City of Ballarat Councillor Glen Crompton at 3 pm on Sunday November 8. Refreshments will be served.

All members of the Friends are invited to attend this event. RSVP to George Longley Building or leave a message on **5342 9354**.

Paintings will be for sale. The exhibition will be manned full time by members of the Botanical Art group.

Next year's calendar/programme, including visiting tutors, is currently being planned.

**ELIZABETH GILFILLAN**



## Australian Association of Friends of Botanic Gardens 2016 Conference: GEELONG

Presentations on topics including threatened complex eco systems, the role of botanic gardens in their sustainability and the role that Friends can play.

**Friday, 29 April:** Registration  
Welcome to Geelong at City Hall

**Saturday, 30 April - Sunday 1 May:**

AAFBG Biennial Conference, hosted by FGBG  
Keynote Speaker – John Arnott  
Geelong Conference Centre in Eastern Park  
On-site accommodation  
Conference Dinner at Deakin Waterfront Kitchen

**Day Tours:** Friday 29 April – Bellarine Peninsula

Monday 2 May – Great Ocean Road and the Otway Ranges

Tuesday 3 May – Western Plains Region

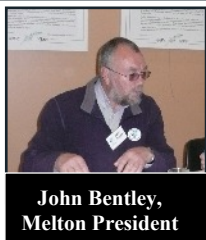
**Registrations:** Conference details available from October 2015

FGBG would appreciate an early indication of attendance: [gardensconference@gmail.com](mailto:gardensconference@gmail.com)

[www.friendsbotanicgardens.org](http://www.friendsbotanicgardens.org)



[www.friendsgbg.org.au](http://www.friendsgbg.org.au)



John Bentley,  
Melton President

**THE NEW WEST AUSTRALIAN GARDEN AT MELTON IS UNDER WAY:** The West Australian-South Australian garden at the Melton Botanic Garden will occupy about one hectare, and is being constructed in 3 stages. The first stage is being built this year, and includes a display bed featuring highlights such a field of paper daisies, and beds representing the Irwin, Eyre and Avon botanical districts. These beds are raised and mulched with sand. Planting of this stage is well advanced, and should be completed during September. Next year, beds representing Roe, Eucla, Austin and Coolgardie districts, and Inland South Australia will be constructed and planted. Work on these beds will commence this spring with plant propagation. (From Melton Friends website)

### BALLARAT DISCOUNTS FOR MEMBERS

- **Formosa Gardens Nursery** 5% off all stock
- **Grow Master** 10% off plant purchases excl adv trees
- **Spot on Pots** 10% off all purchases
- **Blackwood Ridge Nursery** 10% off all purchases

*You will need to show your FBBG membership card*



- The **Growing Friends** need help watering over the summer. Leave a message on **5342 9354**.
- The **BotaniKIDS** team need lots of coloured wool.
- **Treasurer Bruce** wants you to be careful when transferring money into our account!

# BALLARAT BOTANIKIDS : PLANTING IDEAS IN GROWING MINDS.

*Making a difference with a simple pot, a plant and some soil!*

Its been seven years since we formed the The Education Group with the blessing of the Friends committee and in particular our then President Joan Garner and the expert guidance of Sue Beck. With an active little group we began by undertaking simple activities to involve children and their families in the Gardens.

For example The Potting Activity is one that we often plan for our events and happenings and my estimate is that over the last 7 years we have helped over 9,000 children pot a plant! That of course includes our Begonia Festival events and our huge Play Days.

Why?

The children can get their hands dirty basically! We want them to feel the soil, feel the pebbles, feel the plants, see the roots and feel the textures of nature. Often sadly that is a novelty for them!

The BotaniKIDS' mission statement or ethos is '*Planting Ideas for Growing Minds*', and we feel the activity of potting a plant meets the spirit of this perfectly.



Potting a plant sounds easy and simple and we continue to deliberately plan the activity that way. We guide the children and indeed the family through a series of simple steps that show them all the elements required for their little plant to not only survive the 'change' it goes through when being taken from a punnet but thrive and grow in their own new pot.

We hope to teach the children that a plant gets 'a little shock' when it is transplanted. We often talk about, while we are working together, what it is like to start a new school, or change houses and how they need to adjust and give themselves time to settle. We point out it's the same with their little plant. We tell the children they will need to look after their adopted plant give it just the right amount of water, food and light and help it adjust to its new home. Just like people plants need those things to thrive and grow.

Parents and carers invariably enjoy seeing their little and big ones learn and do something that can be taken home and nurtured. The activity usually does not take a great deal of time but many important things will be learnt we hope!

The 'adopted plant' can help parents show and reinforce the idea that growing things is a lovely family thing to do together and the rewards are so easy to see. We chat to the families informally about the instant satisfaction when you learn to grow something in a garden for yourselves and when a family do the garden thing together or even visit our beautiful Botanical Gardens the benefits are obvious. The children spend more time outdoors, they interact and play with natural materials and the natural world in the fresh air!

Even the pot itself is carefully considered. We choose a terracotta pot as it is made from a natural material and is a traditional pot used for planting and gardens for centuries. This pot is often decorated by the children with pastels, paint, fabric or wool so not only will the experience be a simple learning activity involving planting techniques but there will be an element of creativity involved too!



So you see folks even a simple basic planting of a pot becomes a lesson in life!

"Thank you" to the many who have helped, encouraged, collected, collated and baked so willingly over the last few years it has been a great journey of fun and satisfaction.



Samples of the new education materials. Note new branding.

Watch this space to see more of the botanical and horticultural learning journey of your very own Ballarat BotaniKIDS as we now work in a strengthening partnership with the Ballarat Botanical Gardens and the other key stakeholders in this beautiful precinct.

**Julie Bradby BotaniKIDS Group**

**Help required please....we need lots of coloured wool for our new funky planting a plant idea for the Begonia Festival!**

**Please just drop off to the George Longley Building for our collection ...a chance for you to clean out those cupboards.**



**BotaniKIDS 'Walk in the Park'**

(Left) Our recent **Under-5 Coffee and Cake** session; we walked the Gardens culminating in a surprise "Story Tram Ride" courtesy of our friends in the Tramway Museum! It was a mere 3 degrees!

**Julie B.**

**Hamilton Friends:** Once Only Opening of "DUNROE" the Country Garden of Leigh and Geoff Coggins,

7039 Hamilton Port Fairy Rd., Byaduk North

**Sunday 18th October 2015 11am – 3.30pm**

**\$10 per adult. Children free**

*"Go as far as you can see; when you get there, you'll be able to see farther."* J P Morgan



## Friends of Buninyong Botanic Gardens Thursday 5 November Garden Tour

### BUS TOUR OF GARDENS IN THE DANDENONG RANGES

A tour of 3 gardens in the Dandenong Ranges

**KARWARRA AUSTRALIAN PLANT GARDEN AT KALORAMA**

**NATIONAL RHODODENDRON GARDENS**

**BURNHAM BEECHES OR GEORGE TINDALE MEMORIAL GARDENS**

Organiser: Peter Hiscock 53 41 3220 or 0408 337 696

**\$57 MEMBERS \$62 NON MEMBERS**

Bookings must be received by October 24 and forwarded to :

The Treasurer, Friends of the Buninyong Botanic Gardens, PO Box 28, Buninyong 3357

Bank: Buninyong & District Community Bank Branch of Bendigo Bank

Account: Friends of Buninyong Botanic Gardens, BSB: 633 108 Acc No: 1402 95593

Insert your name as a reference e.g. J Smith and email a remittance of your payment & booking form to Treasurer : Russell Luckock email: luckockr@hotmail.com

## WANT TO PAY US SOME MONEY?



If you are paying into our bank account **please remember to identify yourself**, and even what the payment is for. A good method is to use your surname and initial/s as your ID. It makes it easier for our Treasurer if you **state what the payment is for**, e.g. membership renewal, bus trip, etc.

The Friends' bank details are: **BSB 633 000 Acc. No. 125334615**

## 'Garden Cuttings' by Green-Thumb

- It has been proposed that a surveillance camera be installed to protect our trolley of plants outside the Conservatory. Don't forget to smile next time you put your money in the 'watering can' (i.e. money box!).
- The collar to reinforce the southernmost bunya along the PM's Walk will be installed soon too.
- Planning for the Begonia Festival 2016 is well under way.
- "Conservationists are calling on the public to keep an eye out for native water rats in Lake Wendouree. The lake has a population of about 50 water rats called Rakali. The mammal almost disappeared when the lake dried up a few years ago, but are now backing in abundance. Ballarat Botanical Gardens spokesman, Peter Marquand, is urging people to photograph the mammal and send the pics through to council." (Source: <http://www.powerfmballarat.com.au/news/48979-help-needed-to-count-wendouree-s-water-rats> — August 31, 2015)
- **PLEASE** remember to add your personal details when paying the Friends electronically.
- The Growing Friends are preparing a list of volunteers to help with **summer watering**. You can put your name down for a single session, or a regular slot on the roster. Contact **5342 9354 to leave a message**.
- Still looking for input: **Do you remember the Zoo at the Gardens?** While some structures remain in the North Gardens, the Friends' History Group is looking for any facts, memories and photos about "...the who, what, when and why of the Zoo". Leave a message for Lorraine or Kathleen at George Longley if you can help.
- City of Ballarat employees are working on a layout plan for the Friends new permanent position in the Conservatory.
- Garden staff have been conducting an audit of the begonia collection; the aim is for three (3) of each, not 20 of 1, and just singles of others.



John Bentley, President of the Melton Botanic Gardens Friends, rose to the occasion in August. John filled in at extremely short notice when our speaker was unable to attend. Thanks JB and a job well done. Ed



**Photo credits:** Thanks to Raoul and Beth Dixon, Terry O'Brien, Julie Bradby, Elizabeth Gilfillan, Peter Maarquand, Michael Bird and the Ballarat Writers for providing photographs used in this edition. Ed.

## An early "Ho, Ho, Ho"

The Friends 2015 Christmas Break-up BBQ will be held in the Robert Clark Horticultural Centre on Thursday,  
**November 26 at 5 pm.**  
BYO food

# Friends of Ballarat Botanical Gardens Information 2015

Email: [info@fbbg.org.au](mailto:info@fbbg.org.au)  
Website: [www.fbbg.org.au](http://www.fbbg.org.au)

Friends of Ballarat Botanic Gardens Inc.  
P.O. Box 33W Ballarat West 3350

Tel. George Longley Building 03 5342 9354

## Meetings and Events:

October 15 (Thurs) **George Longley Day**; George Longley Building 4.30 pm  
October 19 (Mon) Friends **Rail Trip** to Royal Botanic Gardens Victoria to visit Botanical Art Exhibition and RBGV  
October 26 (Mon) Bus Trip: 'Mawallok' and 'Eurambeen'. Departs Fernery entrance at 8.30 am. (See flyer insert)  
November 13 (Fri) **Spring Lunch** (RCHC)  
November 14 and 15 (Sat and Sun) **Gardens in Spring** (Ballarat area)  
November 26 (Thurs) Friends **Christmas Breakup BBQ**. (RCHC) 5 pm  
March 4, 2016 SPECIAL EVENT. 'Toby Musgrave'. Put this in your diary.  
Launch of Fernery Re-development Program. Details soon.

## MEETING TIMES 2015

Meetings are held in the George Longley Building  
(rear of the Robert Clark Horticultural Centre):

**Committee** - 3rd Tuesday of each month at 3:30 pm

**Growing Friends** - Tuesday each week 1 pm-4 pm,  
and the 2nd Sunday every month, 1 pm-4 pm.  
(During summer also open on 4th Sunday as well.)

**Plant Sales** at the above times.

**Guiding Friends** - 4th Tuesday each month 10 am.

**History Group** - 1st Tuesday each month 4 pm.

**Educating Friends** - 2nd Tuesday each month 10am

**Plant Labelling** - as required.

## BotaniKIDS 2015

- **Children's Week**, October 26-30th **'Trees Please!'** Self Guided activities in the Gardens . Gold coin donation.
- **Archibald Prize activities** in October, **'Heads Up in the Gardens'**, find real art framed in real time, sketching and fun in the Prime Ministers' Walk
- **Coffee and Cake** (Under-5 activities) 10am-12noon, Nov. 10th and Dec 8th.  
More details : <https://www.facebook.com/ballaratbotaniKIDS>  
[Info@fbbg.org.au](mailto:Info@fbbg.org.au)

If you wish to help at any of our activities  
please contact us on the above email address.

**Note** no events planned in Jan and Feb 2016.

## FBBG Botanical Art Group Exhibition

in conjunction with  
**'Ballarat Gardens in Spring'**  
and the Archibald Prize

**Conservatory**  
**Saturday, 7th - Sunday, 15th**  
**November**

Official opening by Cr Glen  
Crompton at 3pm Sunday 8th

## GEORGE LONGLEY DAY

is coming up **F A S T!**

**THURSDAY OCTOBER 15 AT 4.30 PM.**

**ALL MEMBERS WELCOME.**

## 2015-16 FBBG Committee and Areas of Responsibility

POSITION	NAME	POSITION	NAME
<b>President</b>	Raoul Dixon	<b>History Convener</b>	Lorraine Powell
<b>Vice president</b>	John King	<b>Hospitality</b>	Carole Haines
<b>Secretary</b>	Beryl Plummer	<b>Membership</b>	Raoul Dixon
<b>Treasurer</b>	Bruce Holland	<b>Merchandise</b>	Helen Vincent
<b>Convenor Fernery Proj.</b>	Elizabeth Gilfillan	<b>Western Bed Convener</b>	Beryl Plummer
<b>Education Convener</b>	Julie Bradby	<b>General member</b>	Kathleen Hobson
<b>Grants/Proposals</b>	Glen Lake Growers	<b>Newsletter Editor</b>	Michael Bird
<b>Convener</b>	Yvonne Curbach		
<b>Guides Convener</b>	Terry O'Brien	<b>Engraving Convener</b>	Joy O'Brien (non Committee)

**Disclaimer:** The views expressed by contributors are not necessarily those of the Friends of the Ballarat Botanical Gardens or those of the Ballarat Botanical Gardens. Neither the Friends nor the Ballarat Botanical Gardens accepts responsibility for statements made or opinions expressed, although every effort will be made to publish reliable and accurate information. **Contributions for Summer Wellingtonia 2016 are due by early-December please.**  
Michael Bird, Editor. **Editorial Committee** Raoul Dixon, Elizabeth Gilfillan, Helen Vincent and Michael Bird.

*This newsletter is produced and distributed  
with the financial assistance of the City of  
Ballarat.*

